

DESIGN.
—o—
W. T. MURPHY.
BOTTLE OR FLASK.

No. 22,085.

Patented Dec. 27, 1892.

FIG. 1.

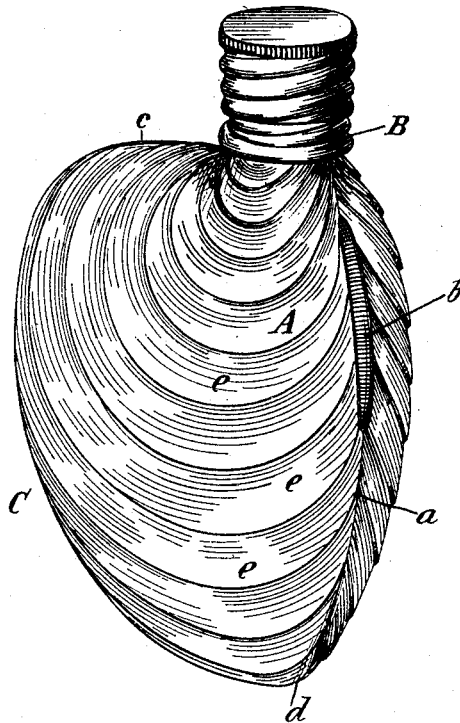
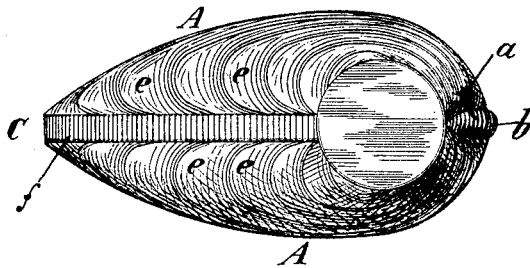


FIG. 2.



WITNESSES:
John Becker
Fred White

INVENTOR:
William T. Murphy
By his Attorneys,
Arthur C. Brasier & Co

UNITED STATES PATENT OFFICE.

WILLIAM T. MURPHY, OF NEW YORK, N. Y.

DESIGN FOR A BOTTLE OR FLASK.

SPECIFICATION forming part of Design No. 22,085, dated December 27, 1892.

Application filed December 10, 1890. Serial No. 374,238. Term of patent $3\frac{1}{2}$ years.

To all whom it may concern:

Be it known that I, WILLIAM T. MURPHY, a citizen of the United States, residing in the city, county, and State of New York, have invented and produced a certain new and original Design for a Bottle or Flask, of which the following is a specification.

This design consists of the shape and surface ornamentation of a bottle or flask. It is made flattened, thicker at one side than at the other, gradually tapering with a convex surface from the thicker toward the thinner side and the thinner side extending laterally and constituting a shoulder. The surface ornamentation consists of successive bands curved so as to approximately follow the outline of the thinner side of the bottle, and slightly raised one above the other, the bands becoming more and more curved as they approach the neck.

My design is shown in the accompanying drawings, wherein

Figure 1 is a perspective of the bottle or flask, and Fig. 2 is a plan thereof.

The body portion of the bottle or flask is formed with a swelled or thick portion at A, from the top of which the neck B projects, and the body tapers toward the left and downwardly in the drawings from the thickest portion A to the edge C where it is reduced considerably in thickness. Both sides are convex, and taper in like manner, joining at the seam or parting *a*. A rib *b* is formed along this seam at the thicker side of the bottle. The thinner side of the bottle projects abruptly in lateral direction from the base of the

neck as shown at *c*, curving thence downwardly to form the thinner edge C which curves downwardly to the bottom at *d*.

The surface ornamentation of the bottle consists of a succession of stripes or bands, the upper ones of which start from the base of the neck, and the successive bands extend in curved direction somewhat eccentric to one another, the curves becoming larger and the bands longer as they descend the side of the bottle, as clearly shown in Fig. 1. Each band at its lower side is slightly raised beyond the level of the next, appearing to overlap and giving a terraced appearance to the side of the bottle. Each band is longitudinally corrugated with parallel lines of fine corrugations. The rib *b* is transversely corrugated as shown in Fig. 1, and a corrugated band *f* is extended around the thinner edge *c*, C, of the flask, from the base of the neck to the point *d*, this corrugated band being shown in Fig. 2.

The entire shape and surface ornamentation of the bottle or flask is such as to give a general and approximate resemblance to, or suggestion of, a pair of clam shells.

I claim:—

The design for a bottle or flask substantially as shown and described.

In witness whereof I have hereunto signed my name in the presence of two subscribing witnesses.

WILLIAM T. MURPHY.

Witnesses:

GEORGE H. FRASER,
CHARLES C. STRANG.